



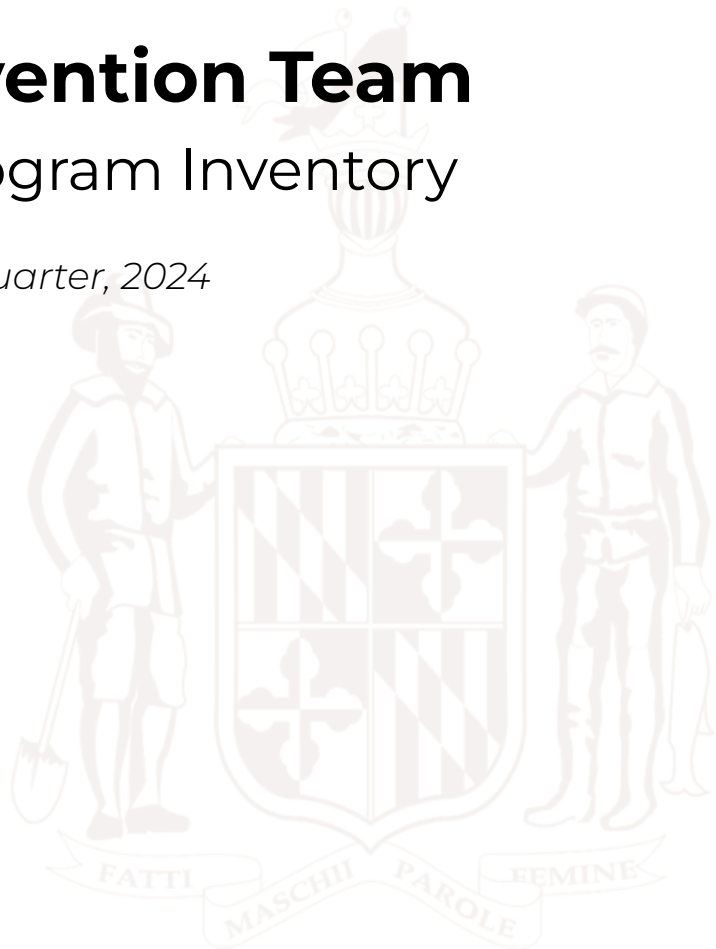
# Maryland's Office of Overdose Response

PREVENTION • HARM REDUCTION • TREATMENT • RECOVERY • PUBLIC SAFETY



## Overdose Prevention Team Substance Use Program Inventory

*As of the Second Calendar Quarter, 2024*



## INTRODUCTION

Pursuant to [Executive Order 01.01.2023.21](#), Maryland's Office of Overdose Response works closely with the Overdose Prevention Teams (OPTs) in each of Maryland's 24 local jurisdictions to promote a comprehensive and coordinated response to the overdose crisis in all parts of the state. OPTs are multi-agency coordinating bodies that work to enhance multidisciplinary collaboration at the local level. Each OPT is chaired by a representative from the local health department and has a designated co-chair from a community organization or another local government agency. OPTs are required to meet at least quarterly, and they must involve representatives from various agencies and organizations, including health, social services, education, public safety (e.g., law enforcement, fire service, and emergency services), harm reduction programs, recovery support programs, substance use treatment programs, community organizations, and faith-based organizations.

A central component of our work with our local partners involves sharing best practices. To do this, we track the implementation of local-level programs and initiatives that seek to reduce overdose-related morbidity and mortality. We have identified 118 frequently implemented programs and services, which are detailed below by jurisdiction in our Substance Use Program Inventory. The Program Inventory uses self-reported OPT data, and responses range from "no programming planned" to "substantial programming in place."

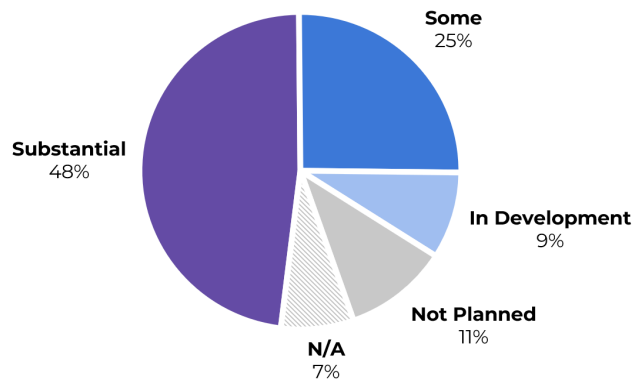
Maryland's Office of Overdose Response recently implemented significant updates to the Program Inventory that narrow the focus specifically on interventions that are substance-related. The updated inventory also now includes new promising overdose prevention strategies, and interventions are now categorized under Maryland's overdose priority areas of *Prevention, Harm Reduction, Treatment, Recovery, and Public Safety*. Going forward, we will update the Program Inventory on a biannual basis.

Please note that some programs may not be applicable in all jurisdictions. For example, programs having to do with higher education will not apply to jurisdictions without a college or university. As such, instances where programming is not applicable for a given jurisdiction are not color-coded. Additionally, persons reporting from each jurisdiction may not have received timely responses from the appropriate agency when completing this reporting, resulting in an N/A report.

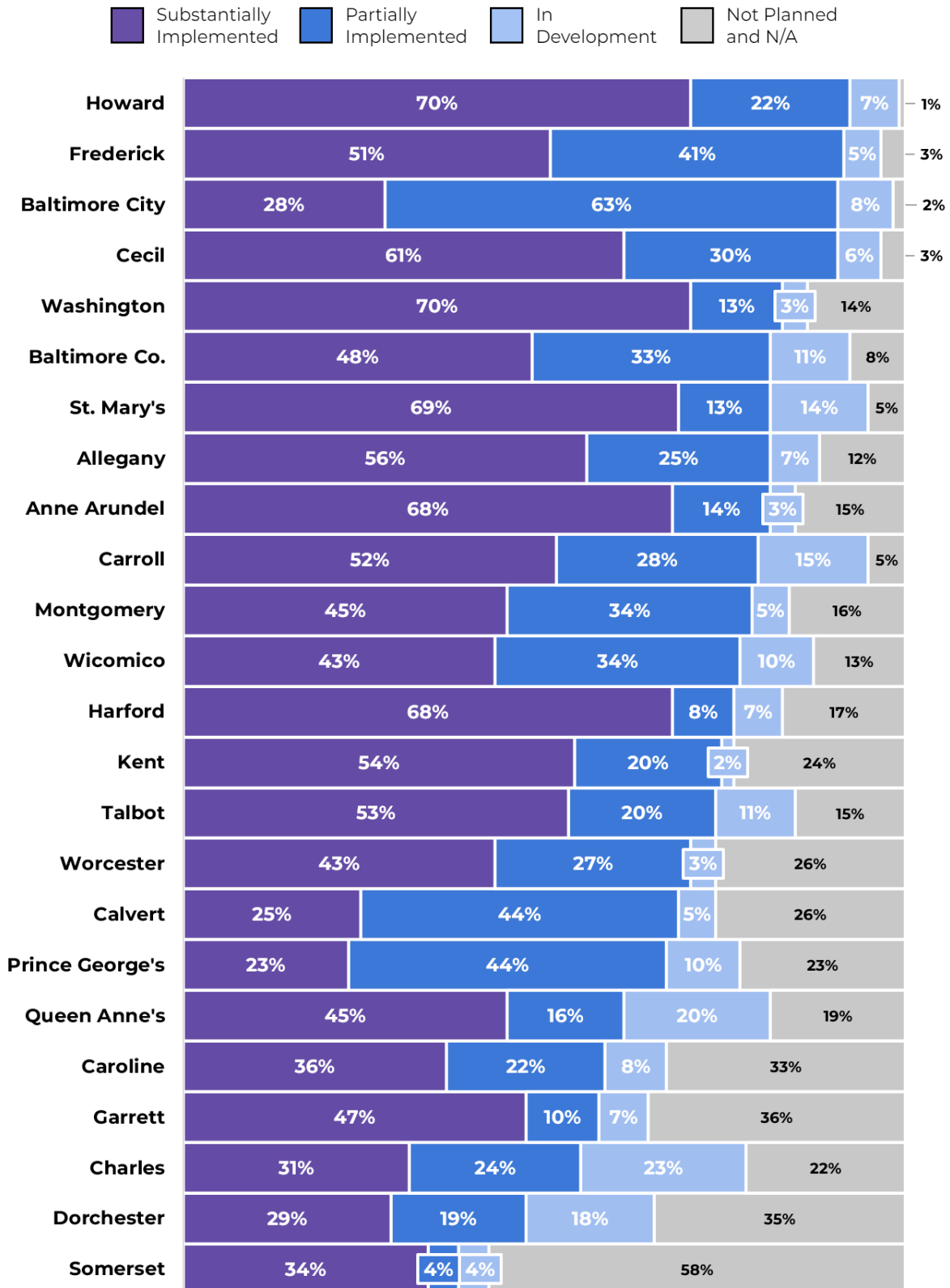
## SUMMARY

As of the second calendar quarter of 2024, Maryland's local jurisdictions continued to make steady progress in implementing programs. As shown in Figure 1, 73 percent of programs were reported to be either partially or substantially implemented while only 11 percent remained unplanned. Thus, while local jurisdictions have made substantial progress in expanding programming in recent years, ample opportunities remain for program expansion across all jurisdictions. Figure 2, below, shows total program implementation status by local jurisdiction, and Figure 4, below, shows statewide implementation status by priority area.

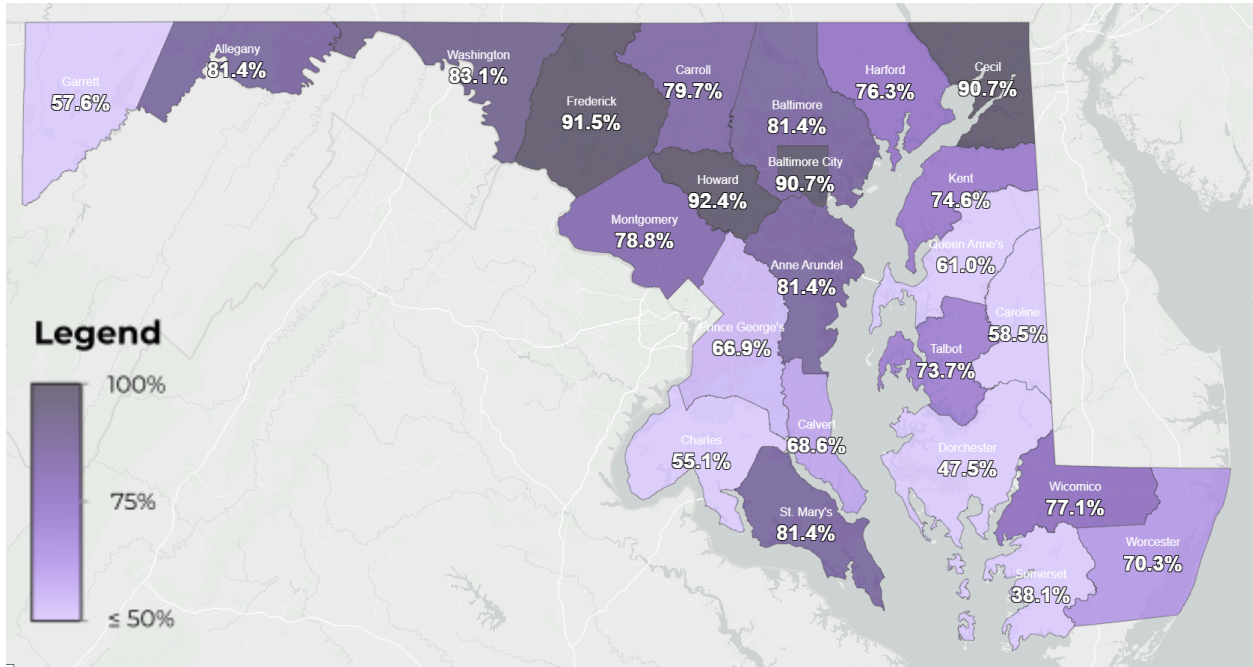
**Figure 1. Statewide Program Implementation**  
As of the Second Calendar Quarter, 2024



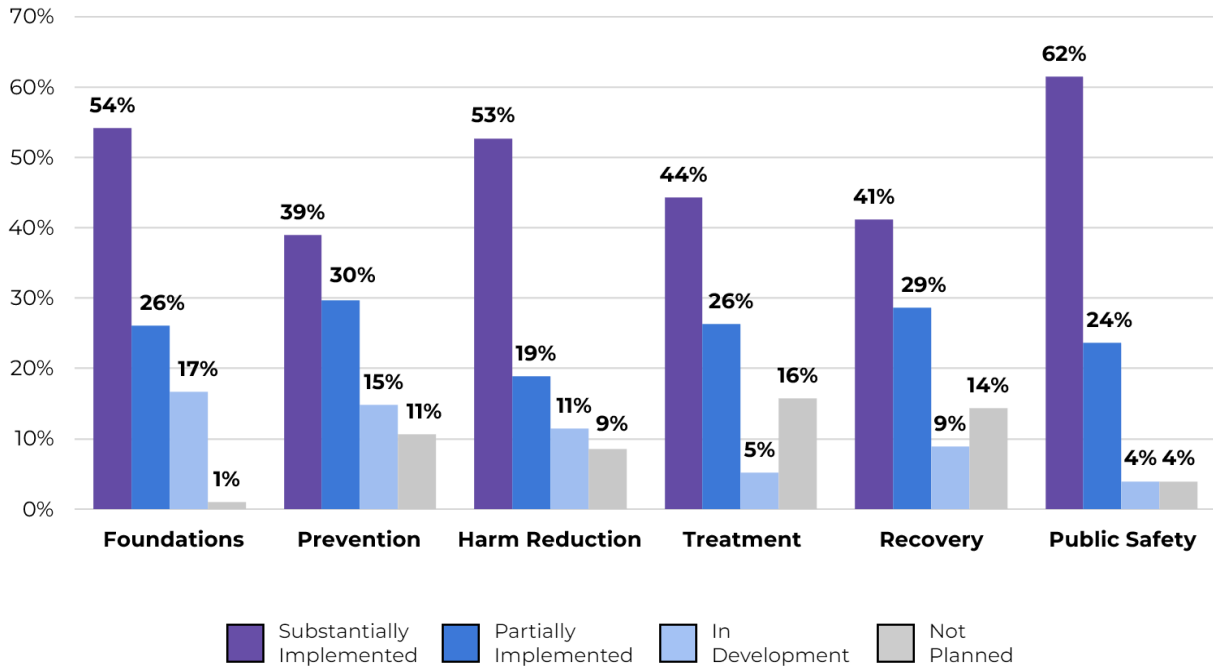
**Figure 2. Total Program Implementation by Local Jurisdiction**  
As of the Second Calendar Quarter, 2024



**Figure 3. Percentage of Substantial & Partial Implementation Status by Local Jurisdiction**  
As of the Second Calendar Quarter, 2024



**Figure 4. Statewide Program Implementation by Priority Area**  
As of the Second Calendar Quarter, 2024



**TABLE 1. OPT PROGRAM INVENTORY**  
*As of the Second Calendar Quarter, 2024*

| Overdose Prevention Team<br>Substance Use Program Inventory<br><b>Foundations</b> | Allegany   | Anne Arundel              | Baltimore City            | Baltimore Co.             | Calvert                   | Caroline                  | Carroll                   | Cecil                     | Charles                   | Dorchester            | Frederick                 | Garrett                   | Harford                   | Howard                    | Kent                      | Montgomery                | Prince George's           | Queen Anne's              | Somerset                  | St. Mary's                | Talbot                    | Washington                | Wicomico                  | Worcester                 |
|---|--|---------------------------|---------------------------|---------------------------|---------------------------|---------------------------|---------------------------|---------------------------|---------------------------|-----------------------|---------------------------|---------------------------|---------------------------|---------------------------|---------------------------|---------------------------|---------------------------|---------------------------|---------------------------|---------------------------|---------------------------|---------------------------|---------------------------|---------------------------|
|   | <b>1. OPT Strategic Plan Updated Within Last 3 years</b> | Substantially Implemented | In Development            | In Development            | Substantially Implemented | Partially Implemented     | Substantially Implemented | Substantially Implemented | Substantially Implemented | In Development        | In Development            | Substantially Implemented | Substantially Implemented | Substantially Implemented | Substantially Implemented | Substantially Implemented | Substantially Implemented | Substantially Implemented | In Development            | Substantially Implemented | Substantially Implemented | Substantially Implemented | Substantially Implemented | Substantially Implemented |
| <b>2. Health Dept. is Involved in ORF Local Abatement Plan with Local Govt.</b>   | Substantially Implemented                                | Partially Implemented     |                           | Substantially Implemented | Partially Implemented     | Substantially Implemented | Substantially Implemented | Partially Implemented     |                           | In Development        | Substantially Implemented | Substantially Implemented | Substantially Implemented | Substantially Implemented | Substantially Implemented | Substantially Implemented | Substantially Implemented | In Development            | Substantially Implemented | Substantially Implemented | Substantially Implemented | Not Planned               | Substantially Implemented | Substantially Implemented |
| <b>3. OPT Includes Local Racial Disparities in Planning</b>                       | Partially Implemented                                    | Substantially Implemented | Substantially Implemented | Partially Implemented     | Partially Implemented     | Substantially Implemented | Partially Implemented     | Partially Implemented     | In Development            | Partially Implemented | Partially Implemented     | Partially Implemented     | In Development            | Substantially Implemented | Substantially Implemented | Substantially Implemented | Substantially Implemented | In Development            | Substantially Implemented | Substantially Implemented | Substantially Implemented | Substantially Implemented | Partially Implemented     | Partially Implemented     |
| <b>4. OPT Includes Local Age Disparities in Planning</b>                          | Partially Implemented                                    | Substantially Implemented | Substantially Implemented | Partially Implemented     | Partially Implemented     | Substantially Implemented | Partially Implemented     | Partially Implemented     | In Development            | In Development        | Partially Implemented     | Substantially Implemented | In Development            | Substantially Implemented | Substantially Implemented | Substantially Implemented | Substantially Implemented | In Development            | Substantially Implemented | Substantially Implemented | Substantially Implemented | Substantially Implemented | Partially Implemented     | Partially Implemented     |

Substantially Implemented
  Partially Implemented
  In Development
  Not Planned
  Not Applicable

**Note:** Maryland’s Office of Overdose Response evaluates and updates the program inventory on a regular basis, and the number of programs may change. We frequently add new programs that have been shown to be effective and, where appropriate, remove programs that no longer fit our criteria for inclusion due to the dynamic nature of the overdose crisis.









| Overdose Prevention Team<br>Substance Use Program Inventory<br><b>Treatment</b> |  | Allegany | Anne Arundel | Baltimore City | Baltimore Co. | Calvert | Caroline | Carroll | Cecil | Charles | Dorchester | Frederick | Garrett | Harford | Howard | Kent | Montgomery | Prince George's | Queen Anne's | Somerset | St. Mary's | Talbot | Washington | Wicomico | Worcester |
|---|--|----------|--------------|----------------|---------------|---------|----------|---------|-------|---------|------------|-----------|---------|---------|--------|------|------------|-----------------|--------------|----------|------------|--------|------------|----------|-----------|
| <b>26. SUD Crisis-Services Facilities (Outside ED)</b>                          |  |          |              |                |               |         |          |         |       |         |            |           |         |         |        |      |            |                 |              |          |            |        |            |          |           |
| a. Assessment and Referral Center   |  |          |              |                |               |         |          |         |       |         |            |           |         |         |        |      |            |                 |              |          |            |        |            |          |           |
| b. 23-Hour Stabilization Services   |  |          |              |                |               |         |          |         |       |         |            |           |         |         |        |      |            |                 |              |          |            |        |            |          |           |
| c. 1-4 Day Stabilization Services   |  |          |              |                |               |         |          |         |       |         |            |           |         |         |        |      |            |                 |              |          |            |        |            |          |           |
| d. Mobile Crisis Team   |  |          |              |                |               |         |          |         |       |         |            |           |         |         |        |      |            |                 |              |          |            |        |            |          |           |
| e. 24/7 Operation   |  |          |              |                |               |         |          |         |       |         |            |           |         |         |        |      |            |                 |              |          |            |        |            |          |           |
| <b>27. Mobile Treatment</b>   |  |          |              |                |               |         |          |         |       |         |            |           |         |         |        |      |            |                 |              |          |            |        |            |          |           |
| <b>28. Medications for Opioid Use Disorder Available in Jurisdiction:</b>       |  |          |              |                |               |         |          |         |       |         |            |           |         |         |        |      |            |                 |              |          |            |        |            |          |           |
| a. Naltrexone   |  |          |              |                |               |         |          |         |       |         |            |           |         |         |        |      |            |                 |              |          |            |        |            |          |           |
| b. Buprenorphine  |  |          |              |                |               |         |          |         |       |         |            |           |         |         |        |      |            |                 |              |          |            |        |            |          |           |
| c. Methadone  |  |          |              |                |               |         |          |         |       |         |            |           |         |         |        |      |            |                 |              |          |            |        |            |          |           |
| <b>29. Outpatient SUD Services in Jurisdiction:</b>                             |  |          |              |                |               |         |          |         |       |         |            |           |         |         |        |      |            |                 |              |          |            |        |            |          |           |
| a. ASAM Level 0.5 Early Intervention  |  |          |              |                |               |         |          |         |       |         |            |           |         |         |        |      |            |                 |              |          |            |        |            |          |           |
| b. ASAM Level 1.0 for Adolescents and Adults                                    |  |          |              |                |               |         |          |         |       |         |            |           |         |         |        |      |            |                 |              |          |            |        |            |          |           |
| c. ASAM Level 2.1 Intensive Outpatient  |  |          |              |                |               |         |          |         |       |         |            |           |         |         |        |      |            |                 |              |          |            |        |            |          |           |
| d. ASAM Level 2.5 Partial Hospitalization                                       |  |          |              |                |               |         |          |         |       |         |            |           |         |         |        |      |            |                 |              |          |            |        |            |          |           |
| <b>30. Residential SUD Services in Jurisdiction</b>                             |  |          |              |                |               |         |          |         |       |         |            |           |         |         |        |      |            |                 |              |          |            |        |            |          |           |
| a. ASAM 3.1 Clinically Managed Low-Intensity                                    |  |          |              |                |               |         |          |         |       |         |            |           |         |         |        |      |            |                 |              |          |            |        |            |          |           |
| b. ASAM 3.3 Clinically Managed High-Intensity (Adults Only)                     |  |          |              |                |               |         |          |         |       |         |            |           |         |         |        |      |            |                 |              |          |            |        |            |          |           |
| c. ASAM 3.5 Clinically Managed High-Intensity (Adults & Adolescents)            |  |          |              |                |               |         |          |         |       |         |            |           |         |         |        |      |            |                 |              |          |            |        |            |          |           |
| d. ASAM 3.7 Medically Monitored Intensive Inpatient                             |  |          |              |                |               |         |          |         |       |         |            |           |         |         |        |      |            |                 |              |          |            |        |            |          |           |
| e. ASAM 3.7 Medically Monitored Inpatient Withdrawal Management                 |  |          |              |                |               |         |          |         |       |         |            |           |         |         |        |      |            |                 |              |          |            |        |            |          |           |
| <b>31. A Treatment Facility in Jurisdiction Accepts People with Wounds</b>      |  |          |              |                |               |         |          |         |       |         |            |           |         |         |        |      |            |                 |              |          |            |        |            |          |           |
| <b>32. EMS Field Buprenorphine Induction</b>                                    |  |          |              |                |               |         |          |         |       |         |            |           |         |         |        |      |            |                 |              |          |            |        |            |          |           |
| <b>33. SUD Screening and Referral Protocol at Medicaid Enrollment</b>           |  |          |              |                |               |         |          |         |       |         |            |           |         |         |        |      |            |                 |              |          |            |        |            |          |           |

Substantially Implemented
  Partially Implemented
  In Development
  Not Planned
  Not Applicable

| Overdose Prevention Team<br>Substance Use Program Inventory<br><b>Treatment (Continued)</b> |  | Allegany                  | Anne Arundel              | Baltimore City            | Baltimore Co.             | Calvert                   | Caroline                  | Carroll                   | Cecil                     | Charles                   | Dorchester                | Frederick                 | Garrett                   | Harford                   | Howard                    | Kent                      | Montgomery                | Prince George's           | Queen Anne's              | Somerset                  | St. Mary's                | Talbot                    | Washington                | Wicomico                  | Worcester                 |                           |
|---|--|---------------------------|---------------------------|---------------------------|---------------------------|---------------------------|---------------------------|---------------------------|---------------------------|---------------------------|---------------------------|---------------------------|---------------------------|---------------------------|---------------------------|---------------------------|---------------------------|---------------------------|---------------------------|---------------------------|---------------------------|---------------------------|---------------------------|---------------------------|---------------------------|---------------------------|
| <b>34. Hospital(s)</b>  |  |                           |                           |                           |                           |                           |                           |                           |                           |                           |                           |                           |                           |                           |                           |                           |                           |                           |                           |                           |                           |                           |                           |                           |                           |                           |
| a. Screening, Brief Intervention, & Referral to Treatment in:                               |  |                           |                           |                           |                           |                           |                           |                           |                           |                           |                           |                           |                           |                           |                           |                           |                           |                           |                           |                           |                           |                           |                           |                           |                           |                           |
| i. Emergency Department   |  | Substantially Implemented | Substantially Implemented | Partially Implemented     | Substantially Implemented | Partially Implemented     | Substantially Implemented | Substantially Implemented | Substantially Implemented | Substantially Implemented | Substantially Implemented | Partially Implemented     | Substantially Implemented | Substantially Implemented | Substantially Implemented | Substantially Implemented | Substantially Implemented | Substantially Implemented | Substantially Implemented | Substantially Implemented | Substantially Implemented | Substantially Implemented | Substantially Implemented | Substantially Implemented | Substantially Implemented | Substantially Implemented |
| ii. Inpatient Settings  |  | Substantially Implemented | Substantially Implemented | Partially Implemented     | Substantially Implemented | Partially Implemented     | Substantially Implemented | Substantially Implemented | Substantially Implemented | Substantially Implemented | Substantially Implemented | Partially Implemented     | Substantially Implemented | Substantially Implemented | Substantially Implemented | Substantially Implemented | Substantially Implemented | Substantially Implemented | Substantially Implemented | Substantially Implemented | Substantially Implemented | Substantially Implemented | Substantially Implemented | Substantially Implemented | Substantially Implemented | Substantially Implemented |
| b. Dedicated SUD Inpatient Unit   |  |                           |                           |                           |                           |                           |                           |                           |                           |                           |                           |                           |                           |                           |                           |                           |                           |                           |                           |                           |                           |                           |                           |                           |                           |                           |
| c. Buprenorphine Induction in:  |  |                           |                           |                           |                           |                           |                           |                           |                           |                           |                           |                           |                           |                           |                           |                           |                           |                           |                           |                           |                           |                           |                           |                           |                           |                           |
| i. Emergency Department   |  | Substantially Implemented | Partially Implemented     | Substantially Implemented | Partially Implemented     | Substantially Implemented | Substantially Implemented | Substantially Implemented | Substantially Implemented | Substantially Implemented | Substantially Implemented | Substantially Implemented | Substantially Implemented | Substantially Implemented | Substantially Implemented | Substantially Implemented | Substantially Implemented | Substantially Implemented | Substantially Implemented | Substantially Implemented | Substantially Implemented | Substantially Implemented | Substantially Implemented | Substantially Implemented | Substantially Implemented | Substantially Implemented |
| ii. Inpatient Settings  |  | Substantially Implemented | Substantially Implemented | Substantially Implemented | Substantially Implemented | Substantially Implemented | Substantially Implemented | Substantially Implemented | Substantially Implemented | Substantially Implemented | Substantially Implemented | Substantially Implemented | Substantially Implemented | Substantially Implemented | Substantially Implemented | Substantially Implemented | Substantially Implemented | Substantially Implemented | Substantially Implemented | Substantially Implemented | Substantially Implemented | Substantially Implemented | Substantially Implemented | Substantially Implemented | Substantially Implemented | Substantially Implemented |
| d. Warm Hand-Off to SUD Providers/Services in:  |  |                           |                           |                           |                           |                           |                           |                           |                           |                           |                           |                           |                           |                           |                           |                           |                           |                           |                           |                           |                           |                           |                           |                           |                           |                           |
| i. Emergency Department   |  | Substantially Implemented | Partially Implemented     | Substantially Implemented | Substantially Implemented | Substantially Implemented | Substantially Implemented | Substantially Implemented | Substantially Implemented | Substantially Implemented | Substantially Implemented | Substantially Implemented | Substantially Implemented | Substantially Implemented | Substantially Implemented | Substantially Implemented | Substantially Implemented | Substantially Implemented | Substantially Implemented | Substantially Implemented | Substantially Implemented | Substantially Implemented | Substantially Implemented | Substantially Implemented | Substantially Implemented | Substantially Implemented |
| ii. Inpatient Settings  |  | Substantially Implemented | Partially Implemented     | Substantially Implemented | Substantially Implemented | Substantially Implemented | Substantially Implemented | Substantially Implemented | Substantially Implemented | Substantially Implemented | Substantially Implemented | Substantially Implemented | Substantially Implemented | Substantially Implemented | Substantially Implemented | Substantially Implemented | Substantially Implemented | Substantially Implemented | Substantially Implemented | Substantially Implemented | Substantially Implemented | Substantially Implemented | Substantially Implemented | Substantially Implemented | Substantially Implemented | Substantially Implemented |
| e. Naloxone Distribution at Discharge   |  |                           |                           |                           |                           |                           |                           |                           |                           |                           |                           |                           |                           |                           |                           |                           |                           |                           |                           |                           |                           |                           |                           |                           |                           |                           |
| f. Peer Specialists on Site at:   |  |                           |                           |                           |                           |                           |                           |                           |                           |                           |                           |                           |                           |                           |                           |                           |                           |                           |                           |                           |                           |                           |                           |                           |                           |                           |
| i. Emergency Department   |  | Substantially Implemented | Substantially Implemented | Partially Implemented     | Substantially Implemented | Substantially Implemented | Substantially Implemented | Substantially Implemented | Substantially Implemented | Substantially Implemented | Substantially Implemented | Substantially Implemented | Substantially Implemented | Substantially Implemented | Substantially Implemented | Substantially Implemented | Substantially Implemented | Substantially Implemented | Substantially Implemented | Substantially Implemented | Substantially Implemented | Substantially Implemented | Substantially Implemented | Substantially Implemented | Substantially Implemented | Substantially Implemented |
| ii. Inpatient Settings  |  | Substantially Implemented | Substantially Implemented | Partially Implemented     | Substantially Implemented | Substantially Implemented | Substantially Implemented | Substantially Implemented | Substantially Implemented | Substantially Implemented | Substantially Implemented | Substantially Implemented | Substantially Implemented | Substantially Implemented | Substantially Implemented | Substantially Implemented | Substantially Implemented | Substantially Implemented | Substantially Implemented | Substantially Implemented | Substantially Implemented | Substantially Implemented | Substantially Implemented | Substantially Implemented | Substantially Implemented | Substantially Implemented |
| g. Wound Care Services Offered  |  |                           |                           |                           |                           |                           |                           |                           |                           |                           |                           |                           |                           |                           |                           |                           |                           |                           |                           |                           |                           |                           |                           |                           |                           |                           |

Substantially Implemented
  Partially Implemented
  In Development
  Not Planned
  Not Applicable

